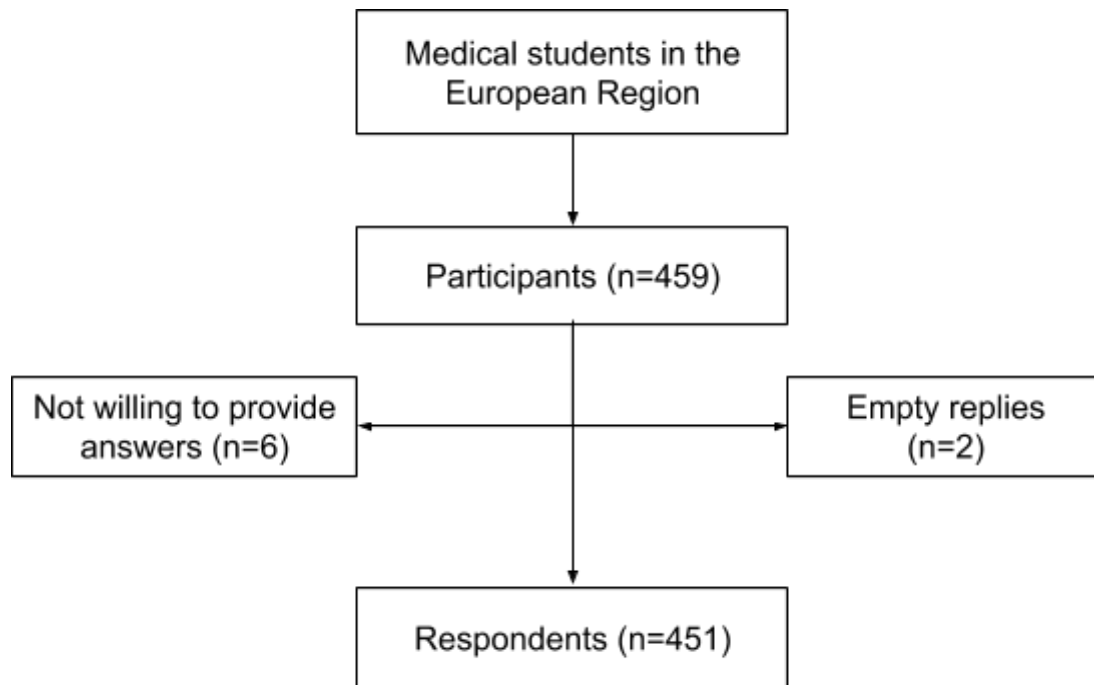
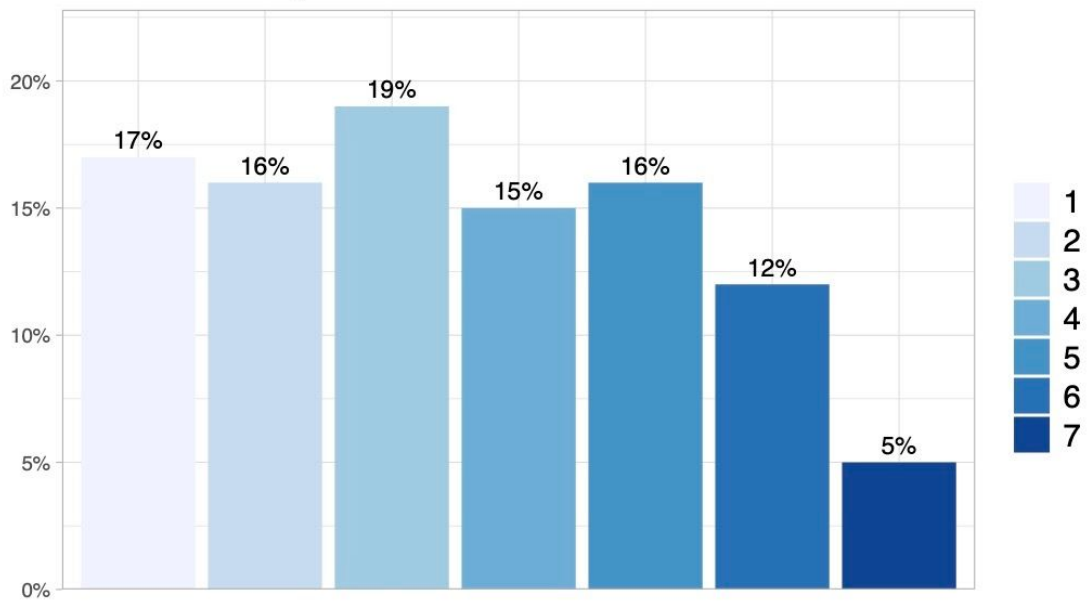


Suppl. figure 1: Flow chart of the participation in the survey

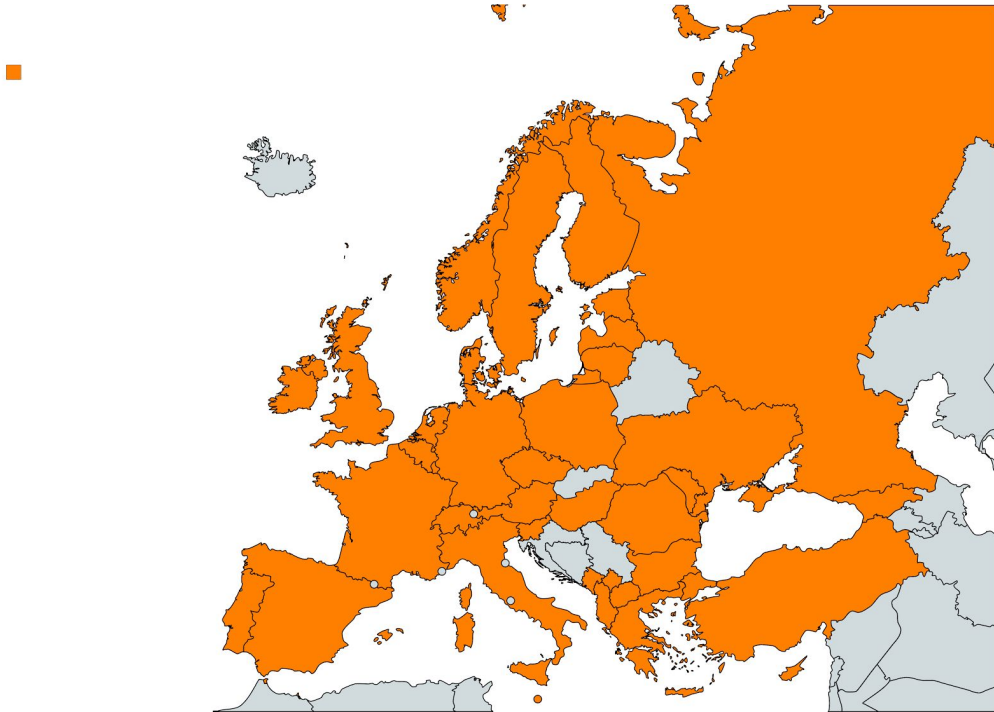


Suppl. figure 2: Overview of year of medical studies of respondents

Please select the year of medical studies:

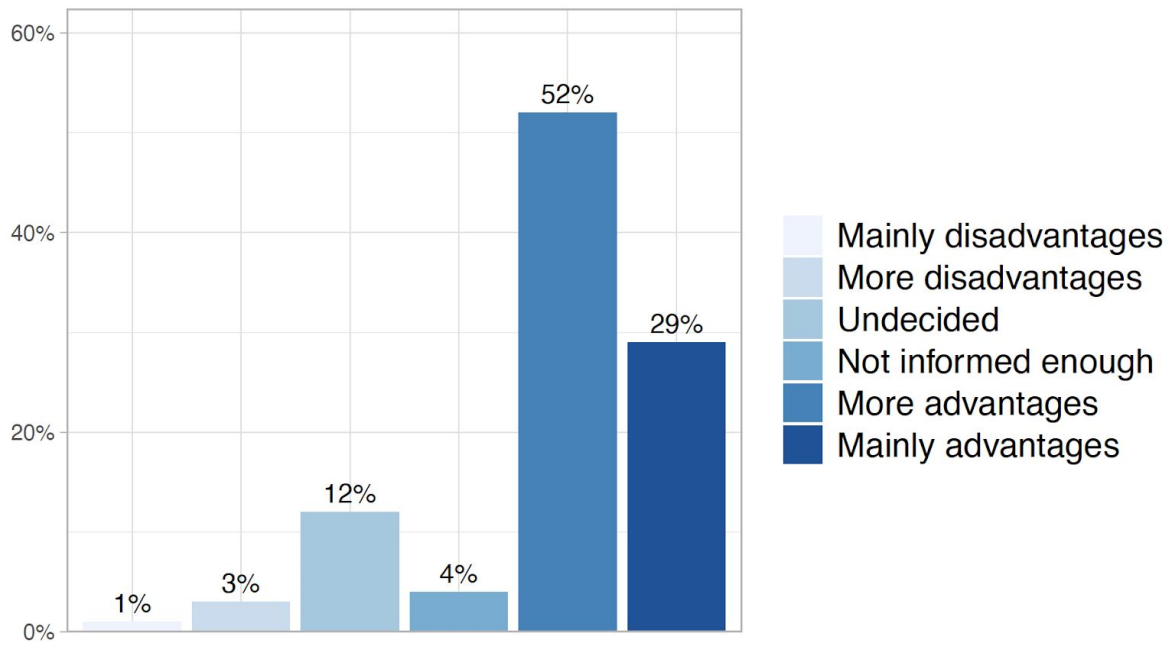


Suppl. figure 3: Geographical distribution of respondents. Countries covered: Albania, Austria, Belgium, Bulgaria, Cyprus, Czech Republic, Denmark, Estonia, Finland, France, Georgia, Germany, Greece, Hungary, Ireland, Italy, Kosovo, Latvia, Lithuania, Luxembourg, Malta, Moldova, Montenegro, Netherlands, Norway, Poland, Portugal, Romania, Russian Federation, Slovakia, Slovenia, Spain, Sweden, Switzerland, the former Yugoslav Republic of Macedonia, Turkey, Ukraine, United Kingdom.

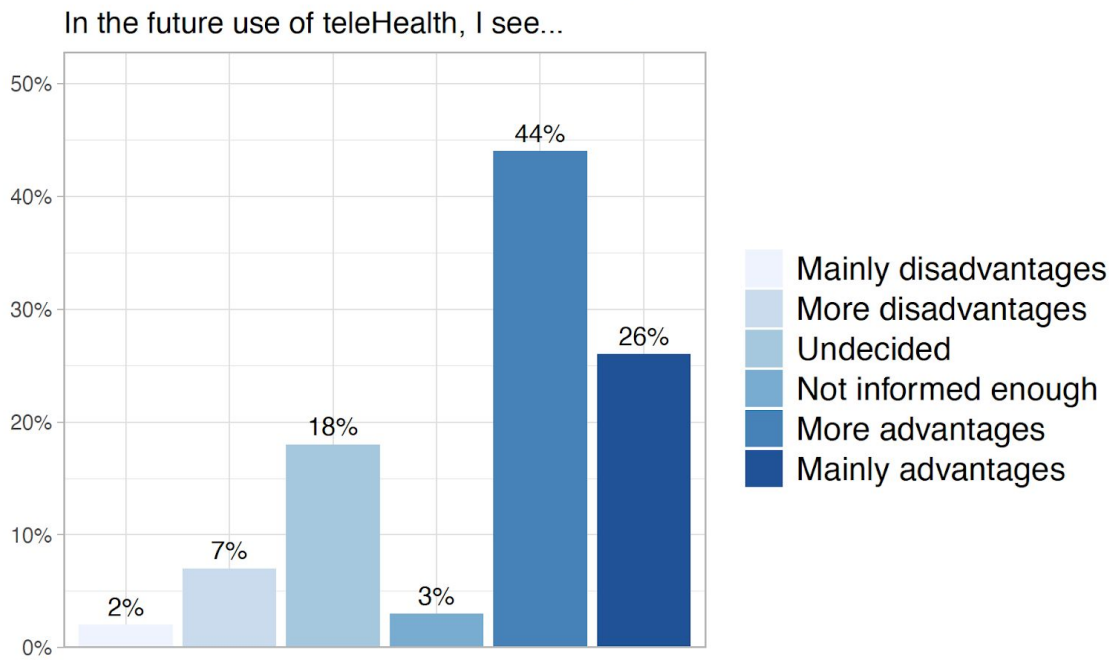


Suppl. figure 4: Attitude of medical students towards mHealth

In the future use of mHealth, I see...



Suppl. figure 5: Attitude of medical students towards teleHealth



Suppl. figure 6: Attitude of medical students towards big data

